

## DBU 10.0 Enhancements

### Multiple Files

A new function has been added to the commands of options 1-5 from the DBUMNU

```
DBU Menu

Select one of the following:

  1. Data Base Utility      (DBU)
  2. Data Base Relations   (DBUDBR)
  3. Field Information      (DBUFLD)
  4. Member List           (DBUMBR)
  5. Format List            (DBUFMT)
  6. DBU Applications      (DBUAPP)
  7. Open Query            (DBUQRY)
  8. Display Journal       (DBUJRN)
  9. Update Data Area      (DBUDTA)
 10. Update User Space     (DBUSPC)
 11. Display Data Queue    (DBUQUE)
 12. Remote Database       (DBURDB)
 13. SQL                   (DBUSQL)
 14. Exit Programs        (DBUEXTPGM)

Selection or command
==> █

F3=Exit  F4=Prompt  F9=Retrieve  F12=Cancel
F13=Information Assistant  F16=AS/400 main menu
```

This new function allows the user to select multiple files to be processed in order of selection with an option to continue with the next file from the list or exit.

```
Data Base Utility (DBU)

Type choices, press Enter.

Object/Application Name: . . . . . ABP*      Name, generic*, *ALL, *PRV...
Library Name: . . . . . DBUTEST      Name, generic*, *LIBL...
DBU Type: . . . . . *FILE      *FILE, *PF, *LF, *DDMF...
Member Name: . . . . . *FIRST      Name, generic*, *FIRST, *ALL
Default Format: . . . . . *DBUAUT      *DBUAUT, *SGL, *MLT
Default Mode: . . . . . *DBUAUT      *DBUAUT, *ADD, *CHG, *DSP
Print Audit Log: . . . . . *DBUAUT      *DBUAUT, *RQD, *ON
Allow Change of File Name: . . . . . *YES      *YES, *NO
Revoke Add Authority: . . . . . *NO      *YES, *NO
Revoke Change Authority: . . . . . *NO      *YES, *NO
Revoke Delete Authority: . . . . . *NO      *YES, *NO
Number of Columns: . . . . . 0      0, 1, 2, 3
PeopleSoft installation: . . . . . *NONE      *NONE, *DBUAUT, WORLD...

Bottom
F3=Exit  F4=Prompt  F5=Refresh  F12=Cancel  F13=How to use this display
F24=More keys
```

When multiple files are selected they will be displayed in the order of selection.

```

DBU Object List

Type options, press Enter.
  1=Select for DBU  2=Trigger Information

Select  Object      Type      Library      Text
  --      -
  --      ABPATHRB    PF        DBUTEST
  --      ABPATHRK    PF        DBUTEST      ABPATHRS
  --      ABPATHRQ    PF        DBUTEST      ABPATHRS
  1       ABPATHRS    PF        DBUTEST      Attorney Hours
  1       ABPATTYS    PF        DBUTEST      Attorney Names & Billing Rates
  █       ABPBILNG    PF        DBUTEST      Billing Invoices
  --      ABPCASES    PF        DBUTEST      Cases
  --      ABPCLMST    PF        DBUTEST      Client Master
  --      ABPEXPNS    PF        DBUTEST      Expenses
  --      ABPFLDLC    PF        DBUTEST      Help/list field location
  --      ABPFLDRG    PF        DBUTEST      Help/List subfile range
  --      ABPFLDTX    PF        DBUTEST      Help text
  --      ABPFLDVL    PF        DBUTEST      Field Values
  --      ABPFREF    PF        DBUTEST      Field Reference
  --      ABPPAYMT    PF        DBUTEST      Payments

More...

F1=Help      F3=Exit      F12=Cancel

```

```

File      Format      Mode      Window      Search      Extra      Help
DATA BASE UTILITY (DBU)
File . . . : ABPATHRS      Member . . : ABPATHRS      Record Length . : 103
Library . . : DBUTEST      Format . . . : ABRATHRS      File Access . . : Arrival
Page# . . . : 1 of 2      Mode . . . : Display      Record Number . : 1
Control . . . █
          Atty#      1
          Client#    1059
          Case#      1
          Mm Wrkd    6
          Dd Wrkd    5
          Yy Wrkd    6
          Type Work  70
          Bill Yorn  N
          Hrs Wrkd  125.20
          Rate Ovrde 165.20
          Bill At Zero Y/n N
          Amount    100.00
          Mm Billed  6
          Dd Billed  12
          Yy Billed  90
          Status, Held-etc -

More...

F1=Help      F2=ON/OFF F=keys      F3=Exit      F4=List fields
F5=Refresh   F6=Set key      F10=Action   F24=More keys
DBU 10.0 COPYRIGHT (C) 2012 PRODATA COMPUTER SERVICES, INC.

```

First file selected from list.

```

File      Format  Mode  Window  Search  Extra  Help
DATA BASE UTILITY (DBU)
File . . . : ABPATHRS      Member . . . : ABPATHRS      Record Length . . : 103
. . . : ABRATHRS          File Access . . . : Arrival
. . . : Display           Record Number . . . : 1
. . . : Attorney Hours FIRST MBR 1245678901

Exit DBU
Continue with next Object (Y/N)
F3=Exit      F12=Cancel

Dd Wrkd 5
Yy Wrkd 6
Type Work 70
Bill Yorn N
Hrs Wrkd 125.20
Rate Ovrde 165.20
Bill At Zero Y/n N
Amount 100.00
Mm Billed 6
Dd Billed 12
Yy Billed 90
Status, Held-etc -

F1=Help      F2=ON/OFF F=keys  F3=Exit      F4=List fields
F5=Refresh   F6=Set key F10=Action  F24=More keys
More...

```

When F3 is pressed, the user will be asked to continue from the list of files selected or EXIT.

If the user pressed ENTER to continue, the next file is processed, if 'N' is entered or F3 is pressed, the program will EXIT.

```

File Fi  Format  Mode Mo  Window  Search  Extra E  Help He
DATA BASE UTILITY (DBU)
File . . . : ABPATTYS      Member . . . : ABPATTYS      Record Length . . : 121
Library . . : DBUTEST      Format . . . : ABRATTYS      File Access . . . : Arrival
Page# . . . : 1 of 2      Mode . . . : Display           Record Number . . : 6
Control . . . :           Text . . . : Attorney Names & Billing Rates

Atty# 7
Atty Name JEROME MARSHAK
Initials JM
Last Name MARSHAK
Stndrd Rate 175.00
Altnate Rate1 175.00
Altnate Rate2 160.00
Altnate Rate3 .00
Yy Effctve 5
Mm Effctve 6
Dd Effctve 1
Job Class A
Class Level 1
Act/inactive 1
Att Office 1
Att Dept 72

F1=Help      F2=ON/OFF F=keys  F3=Exit      F4=List fields
F5=Refresh   F6=Set key F10=Action  F24=More keys
More...

```

## Multiple Record Mode New Feature

A new feature has been added when in Multiple Record Mode. If the user enters +10, for example, the

```

File      Format  Mode      Window      Search      Extra      Help
          DATA BASE UTILITY (DBU)
File . . . : ABPATHRS      Member . . . : ABPATHRS      Record Length . . : 103
Library . . : DBUTEST      Format . . . : ABRATHRS      File Access . . . : Arrival
Control . . : +10         Mode . . . : Display      Record Number . . : 1
Text . . . : Attorney Hours FIRST MBR 1245678901
  
```

Record#	Atty#	Client#	Case#	Mm	Wrkd	Dd	Wrkd	Yy	Wrkd	Type	Work	Bill	Hrs	Wrkd	Rate	Ovride	Bill	At	Zero	Y/n	Amount
1	1	1059	1	6	5	6	70	N	88			N	125.20		165.20		N				100.00
2	111	1056	1001	4	25	88		N	88			N	20.50		.00		N				45.00
3	111	1234	2	4	2	88	456	N	88			N	.90		45.00		N				40.50
4	125	1234	1	4	30	88	65	N	88			N	.50		.00		N				21.50
5	1	1234	2	4	1	89		N	88			N	.30		.00		N				13.50
6	2	1058	1	4	5	88		N	88			N	.40		45.00		N				18.00
8	1	1058	2	4	12	88		N	88			N	1.20		.00		N				54.00
11	2	1058	1	5	25	88		N	88			N	.25		15.00		N				11.25
13	3	1058	1	5	28	88		N	88			N	1.20		.00		N				54.00
15	1	1058	1	5	4	88		N	88			N	.90		40.00		N				36.00
16	111	1058	2	5	27	88		N	88			N	.40		40.00		N				16.00
17	4	1058	1	5	19	88		N	88			N	.30		45.00		N				13.50
18	3	1058	1	7	20	88		N	88			N	1.30		45.00		N				58.50
19	8855	1058	1	7	28	88		N	88			N	.30		45.00		N				13.50

F1=Help                    F2=ON/OFF F=keys        F3=Exit                F4=List fields  
F5=Refresh                F6=Set key              F10=Action             F24=More keys

file will advance 10 records and the +10 will remain in the Control field.

```

File      Format  Mode      Window      Search      Extra      Help
          DATA BASE UTILITY (DBU)
File . . . : ABPATHRS      Member . . . : ABPATHRS      Record Length . . : 103
Library . . : DBUTEST      Format . . . : ABRATHRS      File Access . . . : Arrival
Control . . : +10         Mode . . . : Display      Record Number . . : 11
Text . . . : Attorney Hours FIRST MBR 1245678901
  
```

Record#	Atty#	Client#	Case#	Mm	Wrkd	Dd	Wrkd	Yy	Wrkd	Type	Work	Bill	Hrs	Wrkd	Rate	Ovride	Bill	At	Zero	Y/n	Amount
11	2	1058	1	5	25	88		N	88			N	.25		15.00		N				11.25
13	3	1056	1	5	28	88		N	88			N	1.20		.00		N				54.00
15	1	1058	1	5	4	88		N	88			N	.90		40.00		N				36.00
16	111	1058	2	5	27	88		N	88			N	.40		40.00		N				16.00
17	4	1058	1	5	19	88		N	88			N	.30		45.00		N				13.50
18	3	1056	1	7	20	88		N	88			N	1.30		45.00		N				58.50
19	8855	1058	1	7	28	88		N	88			N	.30		45.00		N				13.50
20	8855	1058	1	7	28	88		N	88			N	.25		45.00		N				11.25
21	3	1058	1	8	3	88		N	88			N	.30		45.00		N				13.50
22	8855	1058	1	8	4	88		N	88			N	.90		45.00		N				40.50
23	85	1058	1	8	9	88		N	88			N	.30		45.00		N				13.50
24	85	1058	1	8	10	88		N	88			N	.30		45.00		N				13.50
25	85	1058	1	8	11	88		N	88			N	.40		45.00		N				18.00
26	85	1058	1	8	18	88		N	88			N	.30		45.00		N				13.50

F1=Help                    F2=ON/OFF F=keys        F3=Exit                F4=List fields  
F5=Refresh                F6=Set key              F10=Action             F24=More keys

Now the user can just press Enter to advance another 10 records.

## Define Search/Replace Enhancement

When the user is in the Define Search/Replace screen, the File, Library, Member and Format

```

Define Search/Replace
File . . . . . : ABPATHRS      Format . . : ABRATHRS
Library . . . . : DBUTEST      A/O: A=AND O=OR
Member . . . . . : ABPATHRS    Operation: GT LT EQ GE LE NE NG NL CT NC
Search... Field Name      Value: Field, Number, 'Characters' or X'HEX'
A/O      *RCD *RRN From    To      Op    Value, *DECERR or *NULL
         ATTY#             EQ      1
-
-
Replace.. Field Name      From    To      Value or *DELETE
-
-
-
Create subset of records . N  Y=Yes, N=No
Include deleted records . N  Y=Yes, N=No
Output results to file . . N  Y=Yes, N=No
Occurrences to process . . 1  1=Next, 2=All, 3=Previous
Kind of match . . . . . 1  1=Same case, 2=Ignore case
Print results . . . . . N  Y=Yes, N=No
Records to Search. . . . 10000 & Progress Messages every 1000 records

F3=Exit F4=Fields F9=Toggle SQL/SEARCH F16=Search F21=Submit to Batch
  
```

information is now displayed.

## Search for Field Text

An additional function has been added the the F4=Fields display.

```

DBU Field Selection
File . . . . . : ABPATHRS      Text . . . . : Attorney Hours FIRST MBR 1245678901
Library . . . . : DBUTEST      Member . . . : ABPATHRS
Position to Record Format . . . . . : ABRATHRS      Name, F4 for list
Position to Field Name . . . . . :                Name, *FIRST, *LAST, Generic*
Position to Text Containing . . . . . : Wrkd
Single Record Text/Field Name . . . . . : TXT      TXT/FLD/BTH/ALS
Mult Record Text/Field/Column Heading . . . . . : HDG      TXT/FLD/HDG/ALS
Select/Remove field Auto Dup . . . . . : RMV      SEL/RMV

Seq#  Display New  New  Auto Upper Allow  Field      Field
      Select Only Line Page Dup Case Null  Text      Name      Type Length Dec  Loc
-----
10    -    -    -    -    -    -    Attu#      ATTY#      S      4      0      1
20    -    -    -    -    -    -    Client#    CLIENT     P      7      0      5
30    -    -    -    -    -    -    Case#      CASE#      P      5      0      9
40    -    -    -    -    -    -    Mm Wrkd    WRKMM     S      2      0     12
50    -    -    -    -    -    -    Dd Wrkd    WRKDD     S      2      0     14
60    -    -    -    -    -    -    Yu Wrkd    WRKYY     S      2      0     16
70    -    -    -    -    -    -    Type Work  WRKTYP    P      3      0     18
80    -    -    -    -    -    -    Bill Yorn  BLABLE    A      1      0     20
90    -    -    -    -    -    -    Hrs Wrkd   HRS       P      5      2     21
100   -    -    -    -    -    -    Rate Ovrr  RATOVR    P      5      2     24

F3=Exit      F5=Create Field      F6=Sort by Fields      F7=Print list
F8=Import fields  F9=Export fields      F24=More keys
  
```

The ability to search for Field Text containing a string has been added.

When the user enters a 'Text Containing' string and presses Enter, the field containing that string will be displayed.

```

DBU Field Selection
File . . . . . : ABPATHRS Text . . . . . : Attorney Hours FIRST MBR 1245678901
Library . . . . : DBUTEST Member . . . . : ABPATHRS
Position to Record Format . . . . . : _____ Name, F4 for List
Position to Field Name . . . . . : _____ Name, *FIRST, *LAST, Generic*
Position to Text Containing . . . . . : _____
Single Record Text/Field Name . . . . . : TXT TXT/FLD/BTH/ALS
Mult Record Text/Field/Column Heading . . : HDG TXT/FLD/HDG/ALS
Select/Remove field Auto Dup . . . . . : RMV SEL/RMV

Seq#  Display  New  New  Auto  Upper  Allow  Field  Field
      Select Only Line Page Dup Case Null Text Name  Type Length Dec Loc
-----
 40  - - - - - - - Mm Wrkd WRKMM S 2 0 12
 50  - - - - - - - Dd Wrkd WRKDD S 2 0 14
 60  - - - - - - - Yu Wrkd WRKYY S 2 0 16
 70  - - - - - - - Type Work WRKTYP P 3 0 18
 80  - - - - - - - Bill Yorn BLABLE A 1 0 20
 90  - - - - - - - Hrs Wrkd HRS P 5 2 21
100  - - - - - - - Rate Ovrrd RATOVR P 5 2 24
110  - - - - - - - Bill At Zero Y/n BILATO A 1 0 27
120  - - - - - - - Amount BILAMT P 9 2 26
130  - - - - - - - Mm Billed BILMM S 2 0 33

```

More...

```

F3=Exit          F5=Create Field      F6=Sort by Fields  F7=Print list
F8=Import fields F9=Export fields    F24=More keys
Press F13 for next occurrence

```

The user can Press F13 to find the next occurrence.

### Sort by Fields

F6=Sort by Fields has been added the the F4 field list screen, this will allow the user to build an index in the order preferred.

```

DBU Field Selection
File . . . . . : ABPATHRS Text . . . . . : Attorney Hours FIRST MBR 1245678901
Library . . . . : DBUTEST Member . . . . : ABPATHRS
Position to Record Format . . . . . : _____ Name, F4 for List
Position to Field Name . . . . . : _____ Name, *FIRST, *LAST, Generic*
Position to Text Containing . . . . . : _____
Single Record Text/Field Name . . . . . : TXT TXT/FLD/BTH/ALS
Mult Record Text/Field/Column Heading . . : HDG TXT/FLD/HDG/ALS
Select/Remove field Auto Dup . . . . . : RMV SEL/RMV

Select Fields to Sort By
Field      Field      Sort
Text      Name      Seq#  A/D
Atty#     ATTY#     1     -
Client#   CLIENT    2     -
Case#     CASE#     3     D
Mm Wrkd   WRKMM     4     -
Dd Wrkd   WRKDD     5     -
Yu Wrkd   WRKYY     6     -
Type Work WRKTYP    7     -
Bill Yorn BLABLE    8     -
Hrs Wrkd  HRS       9     -
Rate Ovrrd RATOVR   10     -

```

More...

```

F3=Exit          F12=Cancel

```

```

File      Format  Mode  Window  Search  Extra  Help
DATA BASE UTILITY (DBU)
File . . . : DBUIDX1      Member . . . : DBUIDX1      Record Length . . : 103
Library . . : QTEMP      Format . . . : ABRATHRS      File Access . . . : Keyed
Page# . . . : 1 of 2     Mode . . . : Display      Record Number . . : 65519
Control . . : █          Text . . . : Index for DBUTEST/ABPATHRS

      Atty#
      Client# 1027
      Case# 1
      Mm Wrkd 10
      Dd Wrkd 24
      Yy Wrkd 95
      Type Work 999
      Bill Yorn Y
      Hrs Wrkd .00
      Rate Ovrde .00
      Bill At Zero Y/n N
      Amount 50.00
      Mm Billed 10
      Dd Billed 24
      Yy Billed 95
      Status, Held-etc -

F1=Help      F2=ON/OFF F=keys  F3=Exit      F4=List fields
F5=Refresh   F6=Set key F10=Action  F24=More keys
More...

```

This new index is created in Qtemp and is presented to the user.

When the user presses F3 to exit, they will have an option to make this index a permanent object. If

```

File      Format  Mode  Window  Search  Extra  Help
DATA BASE UTILITY (DBU)
File . . . : DBUIDX1      Member . . . : DBUIDX1      Record Length . . : 103
Library . . : QTEMP      Format . . . : ABRATHRS      File Access . . . : Keyed
Pa       Co       Make View/Index Permanent
      File . . . : ABINDEX1
      Library . . : DBUTEST
      F1=Help  F3=Exit  F12=Cancel

      Bill At Zero Y/n N
      Amount 50.00
      Mm Billed 10
      Dd Billed 24
      Yy Billed 95
      Status, Held-etc -

F1=Help      F2=ON/OFF F=keys  F3=Exit      F4=List fields
F5=Refresh   F6=Set key F10=Action  F24=More keys
More...

```

the “Make View/Index Permanent” parameter in the DBU authority file is set to “Y” for that user.









## DBU authority

A new option has been added to the DBU authority file by user, this option will determine if a user can 'Make View/Index Permanent'. If this option is set to 'N' the user will not be asked to make it permanent when they exit the View/Index.

```
UPDATE DBU USER AUTHORITY - DEFAULTS      System:  PRODATA6
Profile  QPGMR
Upper/Lower Case Default      U  U=Upper  L=Lower  (Keying into fields)
Order by Key Fields first     N  Y/N
Use Validity Checking         Y  Y/N  (Validity checking from File DDS)
Allow User to change KEYS     Y  Y/N
Allow use of DDM file         Y  Y/N
Data Area Processing          U  D/U/N
User Space Processing          U  D/U/N  (D)isplay (U)pdate (N)ot Allowed
Prompt for DBUAPP creation    N  Y/N
Protect Date Editing          Y  Y=skip slashes,etc.  N=key in slashes,etc.
Process Null Values           Y  Y=write null values  N=write blanks
Make View/Index Permanent     N  Y=allow making permanent  N=do not allow
Date Format/Add                CUR  CUR=Current Date  NUL=Null Date 01/01/0001

Convert JDE date              Y  Y=convert to *USA format  N=do not convert
Edit JDE numeric field length Y  Y=allow change  N=do not allow change
JDE installation (WORLD or ONEWORLD)  ONEWORLD
Default JDE data dictionary library _____

More...

F1=Help  F3=Exit  F12=Return
```

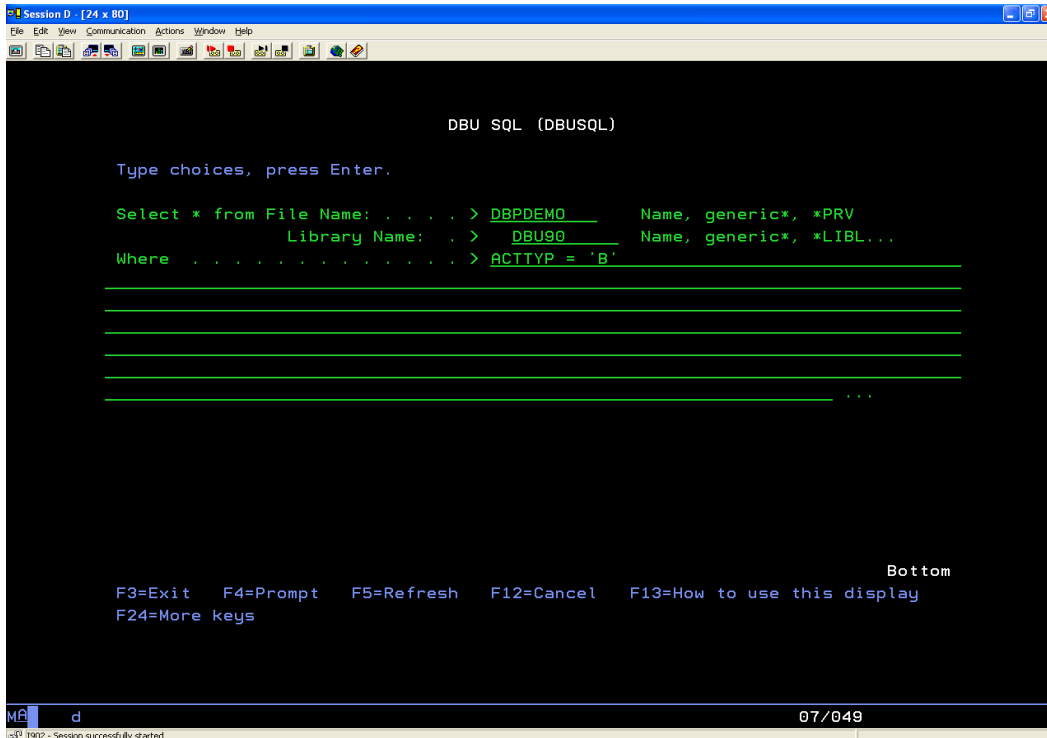
Visit our web site at <http://www.prodatacomputer.com/dbu.shtml> for more information on DBU 10.0

[Download your copy today!](#)

# DBU 9.0 Enhancements

## DBUSQL Command

This command will allow you to do a DBU search, using SQL syntax, without first opening a file in DBU. The results will be presented as a subset of data. For example, prompt the DBUSQL command and define a search:



```
DBU SQL (DBUSQL)

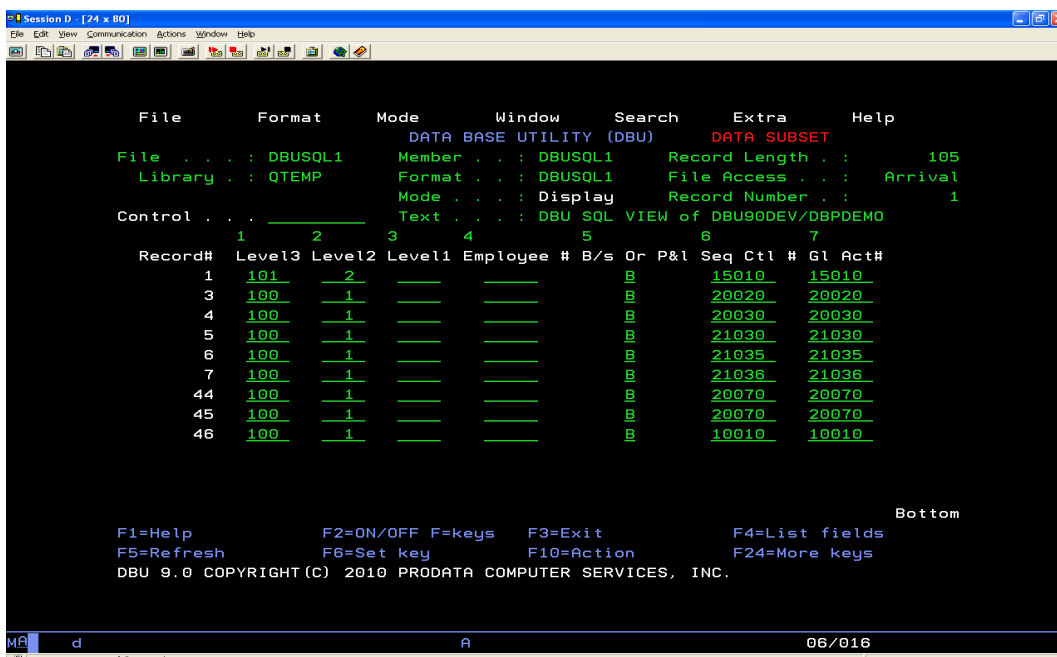
Type choices, press Enter.

Select * from File Name: . . . . > DBPDEMO      Name, generic*, *PRV
                               Library Name: . . > DBU90      Name, generic*, *LIBL...
Where . . . . . > ACTTYP = 'B'

Bottom

F3=Exit  F4=Prompt  F5=Refresh  F12=Cancel  F13=How to use this display
F24=More keys
```

Executing the command defined in the above screen will give results similar to the following:



```
File      Format      Mode      Window      Search      Extra      Help
DATA BASE UTILITY (DBU)      DATA SUBSET
File . . . : DBUSQL1      Member . . : DBUSQL1      Record Length . . : 105
Library . . : QTEMP      Format . . . : DBUSQL1      File Access . . . : Arrival
Control . . : _____      Mode . . . : Display      Record Number . . : 1
Text . . . : DBU SQL VIEW of DBU90DEV/DBPDEMO

  1      2      3      4      5      6      7
Record#  Level3  Level2  Level1  Employee #  B/s  Or P&l  Seq Ctl #  Gl Act#
  1      101      2      _____      _____      B      15010      15010
  3      100      1      _____      _____      B      20020      20020
  4      100      1      _____      _____      B      20030      20030
  5      100      1      _____      _____      B      21030      21030
  6      100      1      _____      _____      B      21035      21035
  7      100      1      _____      _____      B      21036      21036
 44      100      1      _____      _____      B      20070      20070
 45      100      1      _____      _____      B      20070      20070
 46      100      1      _____      _____      B      10010      10010

Bottom

F1=Help      F2=ON/OFF F=keys      F3=Exit      F4=List fields
F5=Refresh      F6=Set key      F10=Action      F24=More keys
DBU 9.0 COPYRIGHT (C) 2010 PRODATA COMPUTER SERVICES, INC.
```

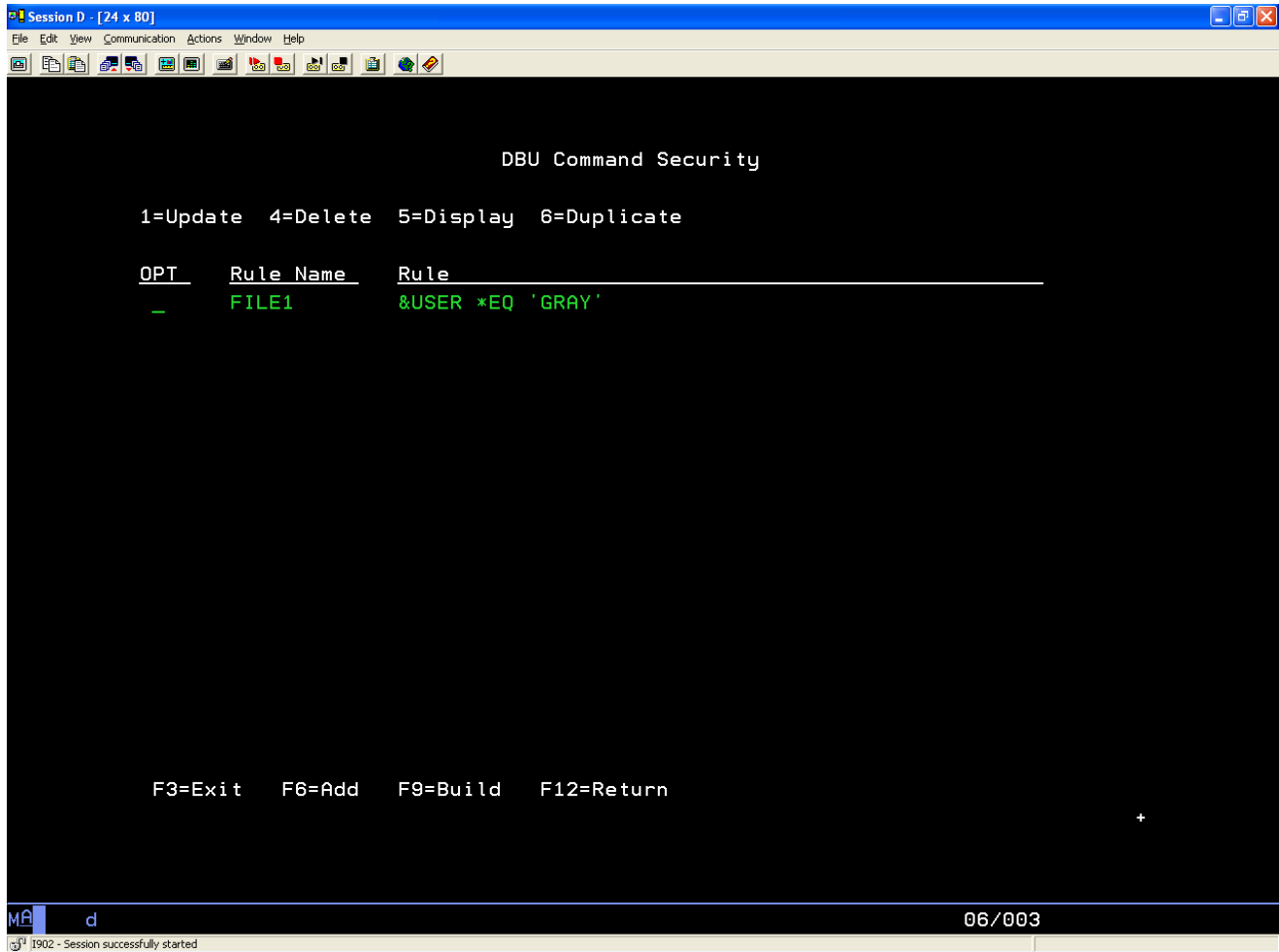




## DBUCMDSEC Command

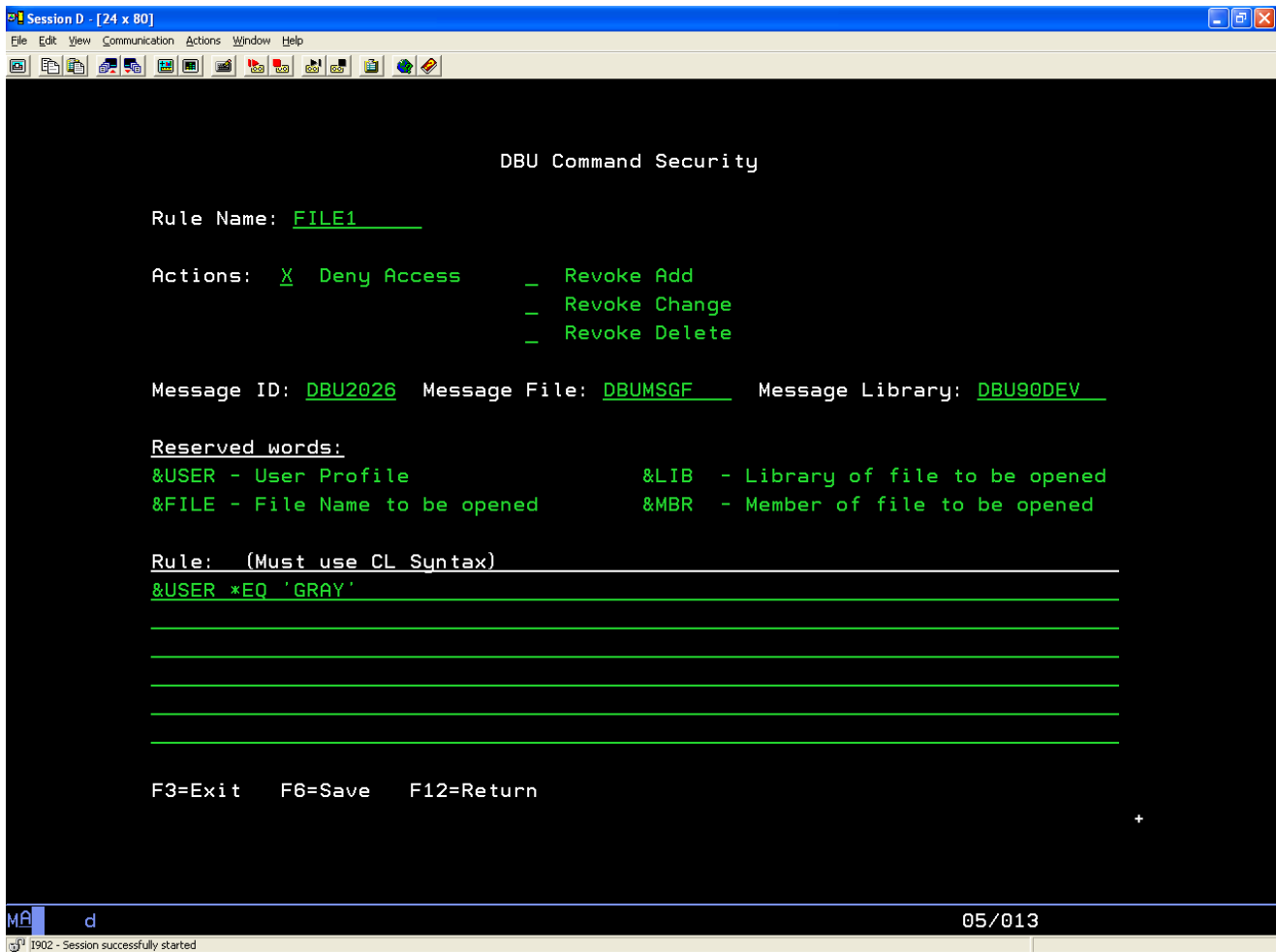
The user will need to understand Control Language (CL) syntax to get maximum utilization of this command. This new command gives the administrator enhanced control over what data users can access using DBU.

Executing the DBUSECCMD command will bring you to the DBU Command Security screen.



The screen above indicates that a rule (FILE1) has already been saved and built. Press F6 to add a new rule to the security program. Select option 1 to update rule FILE1.

In the following example, user Gray is denied access to the DBU command. When user Gray tries to use DBU, the message “Not authorized to use DBU” will be displayed.



## DBUCMDSEC Functions

**Rule Name...** You can give the rule being created any name. In this case it is simply File1.

**Actions...** Deny Access will deny all access to what is defined under **Rule**. Add, Change or Delete can be individually revoked.

**Message ID...**

**Message File...**

**Message Library...** You can use system defined messages or create your own. In this example, a message from the DBU message file in the DBU library is being used.

**Reserved Words...** Use the reserved words to help define to what/whom the Actions will be applied.

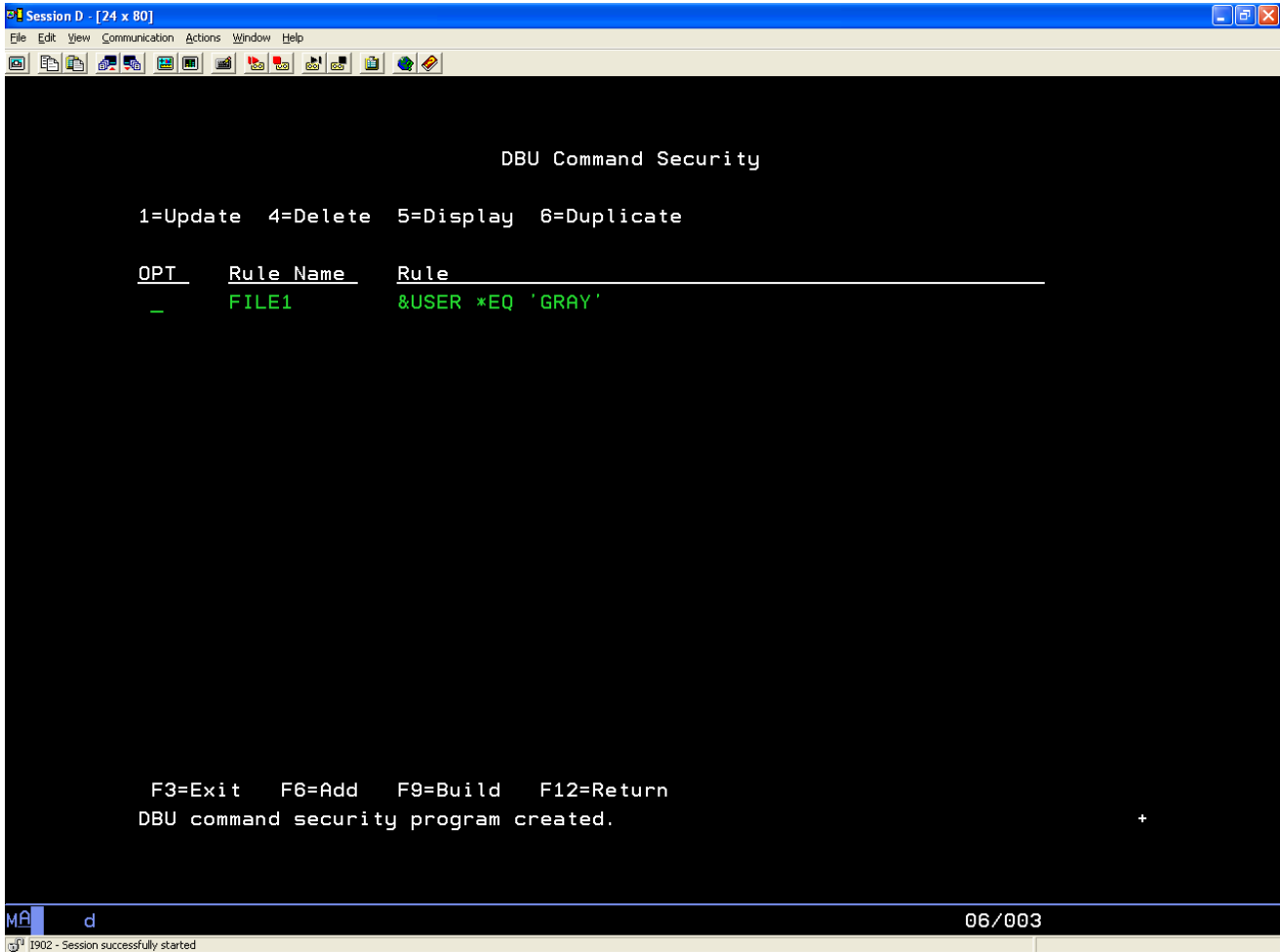
**Rule...** This is where you use a combination of the Reserved Words and CL syntax to define



exactly to what/whom the Actions will be applied.

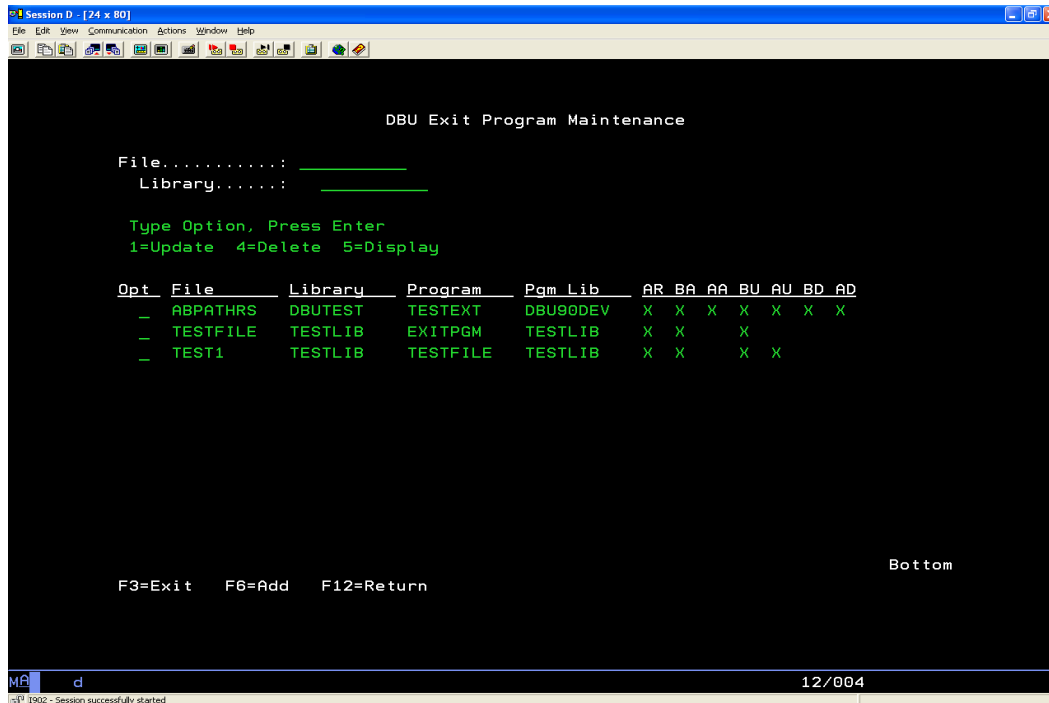
Press F6 to save your rule and return to the DBU Command Security screen.

Press F9 to build and apply the rule to the DBU command security program. Multiple rules can be applied to the program.



## DBUEXTPGM Command

Now, exit programs can be set to execute when performing selected functions using DBU 9.0. Once an exit program has been created, a user can execute the DBUEXTPGM to get to the DBU Exit Program Maintenance screen. In the example below, three files have been defined to execute exit programs when using DBU.



```
Session D - [24 x 80]
File Edit View Communication Actions Window Help
DBU Exit Program Maintenance

File.....: _____
Library.....: _____

Type Option, Press Enter
1=Update 4=Delete 5=Display

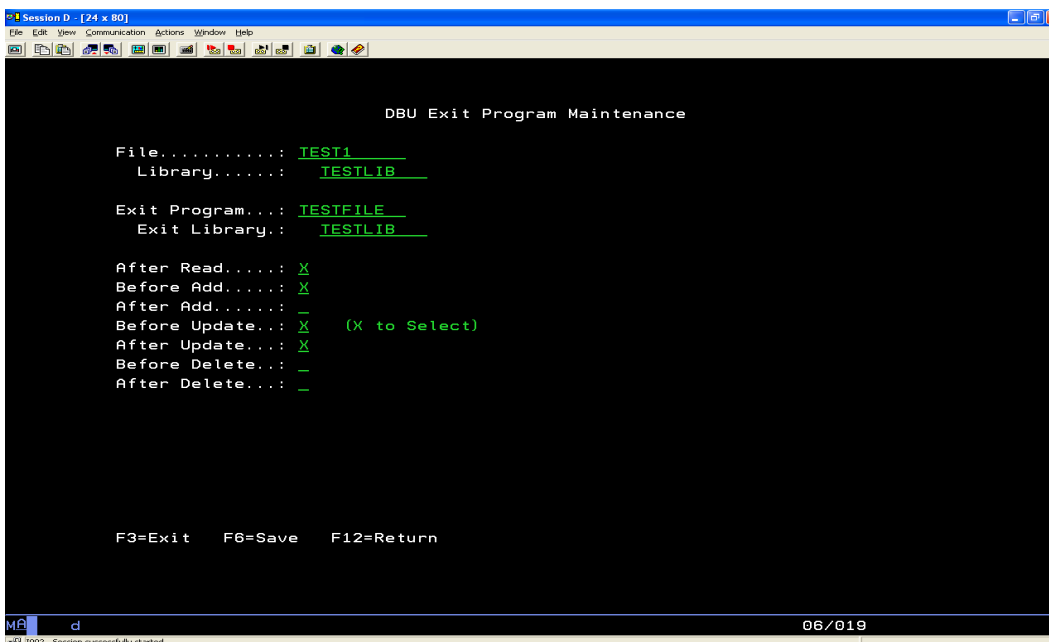
Opt File Library Program Pgm Lib AR BA AA BU AU BD AD
_ ABPATHRS DBUTEST TESTEXT DBU90DEV X X X X X X X
_ TESTFILE TESTLIB EXITPGM TESTLIB X X X
_ TEST1 TESTLIB TESTFILE TESTLIB X X X X

F3=Exit F6=Add F12=Return

Bottom

MA d 12/004
1902 - Session successfully started
```

Assume that in this example file TEST1 has a field that contains personal information (such as SSN) that is encrypted. Selecting option 1 allows the user to update DBU to define what exit program will be executed, and under which conditions.



```
Session D - [24 x 80]
File Edit View Communication Actions Window Help
DBU Exit Program Maintenance

File.....: TEST1
Library.....: TESTLIB

Exit Program...: TESTFILE
Exit Library...: TESTLIB

After Read....: X
Before Add....: X
After Add....: -
Before Update..: X (X to Select)
After Update...: X
Before Delete..: -
After Delete...: -

F3=Exit F6=Save F12=Return

MA d 06/019
1902 - Session successfully started
```

Exit program TESTFILE will be executed for each of these selected operations:

After a record in file TEST1 is read

Before a record in file TEST1 is added

Before a record in file TEST1 is updated

After a record in file TEST1 is updated

Once all the desired operations have been selected, press F6 to save the setup and return to the first screen.

# DBU 8.0 Enhancements

## SEARCH FUNCTION

The top section of the Search/Replace Options screen prompts the user to define the parameters for a search function. There are now two types of search available: a basic (original) search and a search using SQL syntax. Press F9 to toggle between the basic search and the SQL search.

### Basic Search

```

Define Search/Replace
Type choices, press Enter.      A/O: A=AND O=OR
Format...  DBRDEMO             Operation: GT LT EQ GE LE NE NG NL CT NC
Search...                       Value: Field, Number, 'Characters' or X'HEX'
  Field Name
A/O  *RCD *RRN  From  To  Op  Value, *DECERR or *NULL
     GLLVL2  _____  _____  EQ  1
  A   ACTTYP  _____  _____  EQ  'B'
  _   _____  _____  _____  _   _____
                                           More...

Replace..
  Field Name  From  To  Value or *DELETE
  _____  _____  _____  _____
  _____  _____  _____  _____
                                           More...

Create subset of records . Y Y=Yes, N=No
Include deleted records . N Y=Yes, N=No
Output results to file . . N Y=Yes, N=No
Occurrences to process . . 1 1=Next, 2=All, 3=Previous
Kind of match . . . . . 1 1=Same case, 2=Ignore case
Print results . . . . . N Y=Yes, N=No
Records to Search. . . . . 5000 & Progress Messages every 1000 records
F3=Exit F4=Fields F9=Toggle SQL/SEARCH F16=Search F21=Submit to Batch
  
```

### SQL search

```

Define Search/Replace
Select * from DBU80/DBPDEMO where
GLLVL2 = 1 and ACTTYP = 'B'
_____
_____
_____
_____
_____
_____
_____
_____
                                           More...

Replace..
  Field Name  From  To  Value or *DELETE
  _____  _____  _____  _____
  _____  _____  _____  _____
                                           More...

Create subset of records . Y Y=Yes, N=No
Include deleted records . N Y=Yes, N=No
Output results to file . . N Y=Yes, N=No
Occurrences to process . . 1 1=Next, 2=All, 3=Previous
Kind of match . . . . . 1 1=Same case, 2=Ignore case
Print results . . . . . N Y=Yes, N=No
Records to Search. . . . . 5000 & Progress Messages every 1000 records
F3=Exit F4=Fields F9=Toggle SQL/SEARCH F16=Search F21=Submit to Batch
  
```

The above figures show a search using the same criteria using both methods.

## SEARCH FUNCTION – EXPORT DATA

F9=Export Fields - Will create/change physical file member in a source file from the fields selected on the field selection screen. The fields will be ordered by the Seq# on the field selection screen. If no fields are selected, all fields will be copied.

This option may be used two ways:

1. Create source specs for S/36 described files (e.g. **DBU** a S/36 described file, F4 to bring up field list. F8 to bring up Import Fields Screen. Fill out this screen and press enter to bring fields into **DBU** application. Select and sequence the fields to be exported. Press F9 to bring up the Export Fields screen. Fill out this screen and press enter. All fields marked will be placed in the source member defined on the screen).
2. Create new DDS or SQL source member for an existing externally described file. **DBU** an externally described file, F4 to bring up a field list. Select and sequence the fields to be exported. Press F9 to bring up the Export Fields Screen. Fill out screen and press enter. All fields marked will be placed in the source member defined on the screen.

**Caution:** The default source member name is the file name of the externally described file. If using this method, change the source member name and/or the source and library name or your original physical file specification will be replaced.

This command key (F9) brings up a window to select export to either DDS or SQL.

```
DBU Field Selection
File . . . . : DBPDEMO   Text . . . . : Demo Data
Library . . . : DBU80    Member . . . : DBPDEMO
Position to Record Format .
Position to Field Name . .
Single Record Text/Field Na
Mult Record Text/Field/Colu
Select/Remove field Auto Du
Display New New
Seq# Select Only Line Pag
 10 X   - Level3
 20 X   - Level2
 30 X   - Level1
 40 X   - Employee #
 50 X   - B/s Or P&l
 60 -   - Seq Ctl #
 70 -   - Gl Act#
 80 -   - Subact
 90 -   - Source
100 -   - Entry#
                                GLEMP#   S   4   0   7
                                ACTTYP   A   1           11
                                SEQ#     P   5   0   12
                                ACCT#    P   5   0   15
                                SUB#     P   3   0   18
                                JESRCE   A   2           20
                                ENTRY#   A   6           22
                                More...

Export DDS or SQL *
_ 1. Export DDS
 2. Export SQL

F3=Exit          F12=Cancel

F3=Exit          F5=Create Field      F7=Print list
F8=Import fields F9=Export fields    F10=More Attributes F24=More keys
```

Option 1, Export DDS, brings up a window with the following fields:

**Source File** - Name of the source file which will contain(s) the physical file specifications to be created/changed.

**Library** - Library where source file resides.

**Source Member** - Physical files member to be created/changed.

**Replace Existing Member** -

Y = Replace existing file specifications with fields selected on screen.

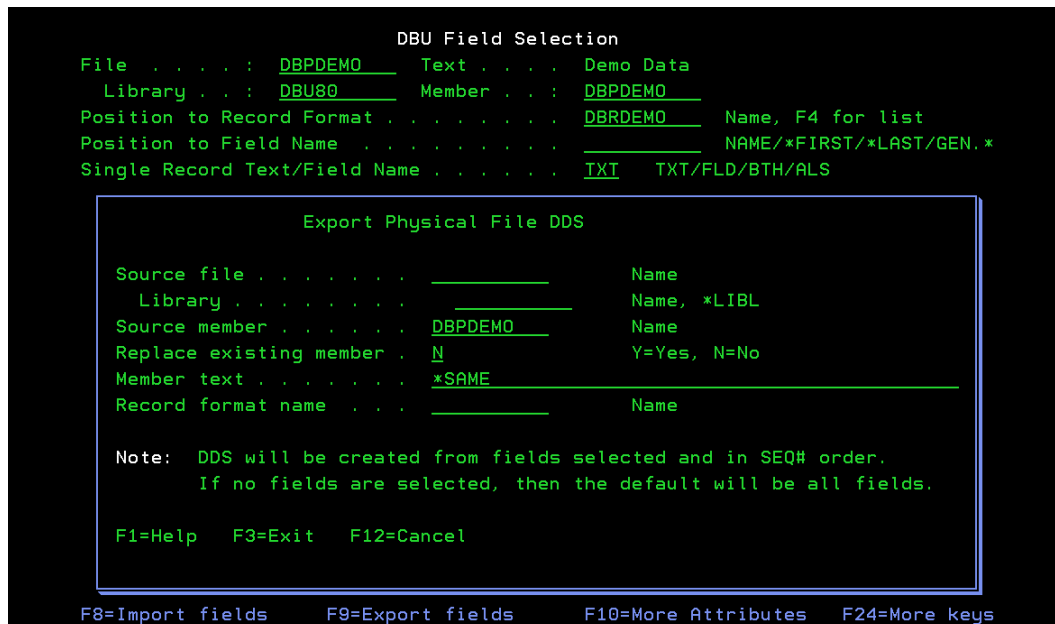
N = Selected field will be added to the end of the existing physical file specification in the source member.

**Member Text** -

\*SAME - Do not change text on an existing member.

Text - Either change text on an existing member or define text for a new member. Text will not carry to new member if it is being created from an existing member.

**Record Format Name** - Name to be used for the record format if different from the physical file name.



Option 1, Export SQL, brings up a window with the following fields:

**Source File** - Name of the source file which will contain(s) the physical file specifications to be created/changed to SQL table source.

**Library** - Library where source file resides.

**Source Member** - Physical files member to be created/changed.

**Replace Existing Member** -

Y = Replace existing file specifications with fields selected on screen.

N = Selected field will be added to the end of the existing physical file specification in the source member.

**Member Text** -

\*SAME - Do not change text on an existing member.

Text - Either change text on an existing member or define text for a new member. Text will not carry to new member if it is being created from an existing member.

```
DBU Field Selection
File . . . . . : DBPDEMO   Text . . . . . Demo Data
Library . . . . : DBU80    Member . . . . : DBPDEMO
Position to Record Format . . . . . : DBRDEMO   Name, F4 for list
Position to Field Name . . . . . :             NAME/*FIRST/*LAST/GEN.*
Single Record Text/Field Name . . . . . : TXT    TXT/FLD/BTH/ALS

Export SQL Create statement

Source file . . . . . :             Name
Library . . . . . :             Name, *LIBL
Source member . . . . . : DBPDEMO   Name
Replace existing member . : N       Y=Yes, N=No
Member text . . . . . : *SAME

F1=Help  F3=Exit  F12=Cancel

F8=Import fields  F9=Export fields  F10=More Attributes  F24=More keys
```

## FAST COMMANDS

A new fast command from the control field:

TRG – Display database triggers on physical files.

An enhanced fast command for record duplication:

DUP - Go to ADD mode and duplicate as many records as desired from the data currently shown.

## KEY FIELD ARRANGEMENT

Using the DBU User Authority command, you can display the keyed fields first in keyed files.

## MIGRATE DDS SOURCE TO SQL DEFINITIONS

The Export Fields option (F9) can now be used to create a SQL source member.

Create new DDS or SQL source member for an existing externally described file. **DBU** an externally described file, F4 to bring up a field list. Select and sequence the fields to be exported. Press F9 to bring up the Export Fields Screen. Fill out screen and press enter. All fields marked will be placed in the source member defined on the screen.

**Caution:** The default source member name is the file name of the externally described file. If using this method, change the source member name and/or the source and library name or your original physical file specification will be replaced.

This command key (F9) brings up a window to select export to either DDS or SQL.

```
DBU Field Selection
File . . . . : DBPDEMO   Text . . . . : Demo Data
Library . . . : DBU80    Member . . . : DBPDEMO
Position to Record Format .
Position to Field Name . .
Single Record Text/Field Na
Mult Record Text/Field/Colu
Select/Remove field Auto Du
Display New New
Seq# Select Only Line Pag
10 X - Level3
20 X - Level2
30 X - Level1
40 X - Employee #
50 X - B/s Or P&l
60 - - Seq Ctl #
70 - - Gl Act#
80 - - Subact
90 - - Source
100 - - Entry#
GLEMP# S 4 0 7
ACTTYP A 1 11
SEQ# P 5 0 12
ACCT# P 5 0 15
SUB# P 3 0 18
JESRCE A 2 20
ENTRY# A 6 22
More...

F3=Exit      F5=Create Field      F7=Print list
F8=Import fields  F9=Export fields    F10=More Attributes  F24=More keys
```

Export DDS or SQL \*

\_ 1. Export DDS  
2. Export SQL

F3=Exit                  F12=Cancel

Option 2, Export SQL, brings up a window with the following fields:

**Source File** - Name of the source file which will contain(s) the physical file specifications to be created/changed to SQL table source.

**Library** - Library where source file resides.

**Source Member** - Physical files member to be created/changed.



## Replace Existing Member -

Y = Replace existing file specifications with fields selected on screen.

N = Selected field will be added to the end of the existing physical file specification in the source member.

## Member Text -

\*SAME - Do not change text on an existing member.

Text - Either change text on an existing member or define text for a new member. Text will not carry to new member if it is being created from an existing member.

```
DBU Field Selection
File . . . . . : DBPDEMO   Text . . . . . Demo Data
Library . . . . : DBU80    Member . . . : DBPDEMO
Position to Record Format . . . . . : DBRDEMO   Name, F4 for list
Position to Field Name . . . . . :             NAME/*FIRST/*LAST/GEN.*
Single Record Text/Field Name . . . . . : TXT   TXT/FLD/BTH/ALS
```

```
Export SQL Create statement

Source file . . . . . : _____ Name
Library . . . . . : _____ Name, *LIBL
Source member . . . . : DBPDEMO   Name
Replace existing member . N       Y=Yes, N=No
Member text . . . . . : *SAME
```

F1=Help F3=Exit F12=Cancel

F8=Import fields F9=Export fields F10=More Attributes F24=More keys

## DBU70 enhancements

National Language Support – If you require DBU to function in a different language please contact ProData Computer Services to discuss this new feature.

Quick Launch icons – DBU/GUI will allow you to create an Icon for your desktop. After you bring up the data in DBU/GUI click on Tools on the Menu bar and select Create Desktop Icon. This can be used in conjunction with a DBUAPP to allow users who frequently use a DBUAPP to launch this from their desktop.

Export database records to multiple formats – With DBU/GUI you can now export your data in HTML, XML or Comma delimited formats. Click on Tools on the Menu bar and select Export to PC.

DBU Tip of the Day – A ‘Tip of the Day’ will be displayed for the first 30 days that DBU is used (there is an option to turn this off using the command DBUAUT). You can also use DBUAUT to allow new users the ability to see the Tip of the Day as required. This feature is only available with the traditional green screen not with DBU/GUI.

Map function keys – From the DBUAUT screen you can map functions to F-keys. This is located on the final screen of DBUAUT.

New print options- when specifying PRT in the control field you can print multiple records and all or selected fields and either character or hex. This can also be accessed using DBU/GUI by clicking on Tools and then select Print Record.

New fast commands from the Control field –

UP – Alpha fields will use upper case

LOW – Alpha fields will use either upper or lower case.