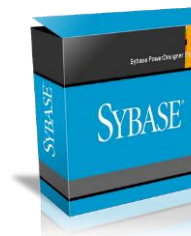




RDBConnect 4

Share data between IBMi and other databases

Full SQL Access to remote databases from RPG, CL and
COBOL programs



- New API's added
- Seamless error handling
- Quickly share data across platforms



RDBConnect 4

An improved RDBConnect product to share data between IBM i and other databases.



New



RDBConnect Menu

New and improved Menu driven interface with easy access to many commands.

```
Manage Remote Systems

Job Status.....:   Active           Java Version..: Press F22 to display
Turn Tracing On....: Y
Server port number.: 9082
Log File Size..:   25 MB
Log Size Max...:   32 MB

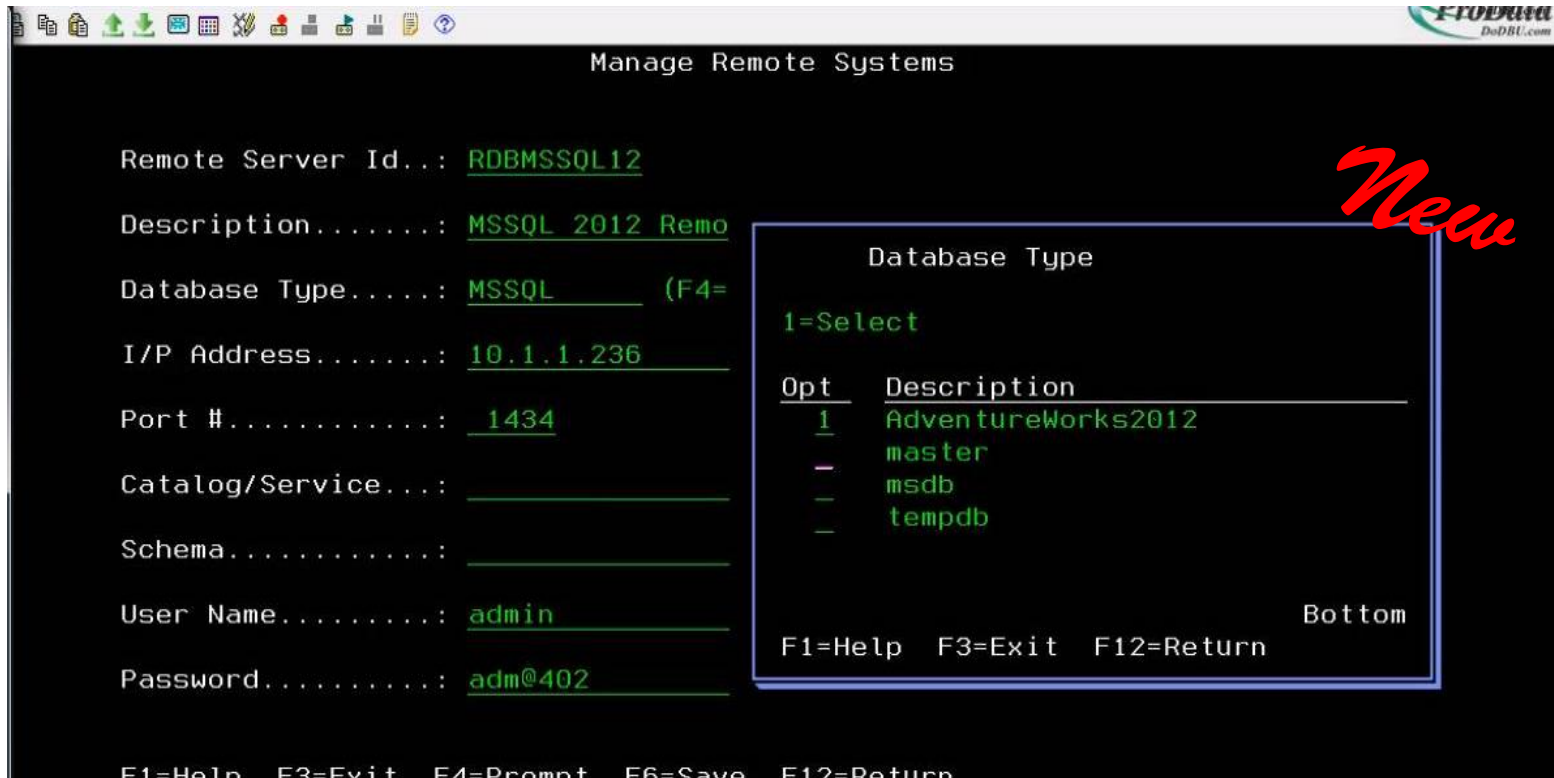
Type Option, Press Enter
1=Update 4=Delete 5=Display 7=Edit Authority 8=Tables 9=Test Connection

Opt RDB Name   DB Type   Remote Connection Description
---
 1 ALEXMSSQL  MSSQL    MSSQL on my PC
 2 CSVTEST   ODBC     CSV File
 3 MONGOCLOUD MONGODB  Mongo Cloud DB
 4 MONGODB1  MONGODB  MongoDB Connection
 5 ORACLE    ORACLE   Oracle 12c on Virtual Machine
 6 RDBACCESS ODBC     MS ACCESS DB
 7 RDBDB2    DB2      DB2 Test
 8 RDBFIREB FIREBIRD  FireBird Database
 9 RDBMSSQL08 MSSQL    MSSQL 2008 Remote Database
10 RDBMSSQL12 MSSQL    MSSQL 2012 Remote Database

F1=Hlp F3=Exit F6=Add F7=Logs F8=IFS F20=End Job F21=Clr Logs F22=JVM
```

RDBCConfig - Manage Remote Systems

- Improved configuration screen
- Job status
- Java version
- Log file size and log size maximum.
- Start/End the RDBSBS subsystem
- Clear trace logs
- Display java version running on system
- easy access to remote database tables
- Display trace logs, turn ON/OFF
- Retrieve IFS directory.



New Catalog and Schema prompt

Now you can prompt a remote database catalog and schema fields. This option will vary based on the database JDBC native driver. This feature has been tested with the following JDBC drivers (MSSQL, MYSQL and POSTGRESQL).

```
Remote Table List

Remote Server.....: RDBMSSQL12 (F4=Prompt)
Table Generic.....: %

5=Display
Type Option, Press Enter
Opt Table Name
-----
  AWBuildVersion
  CITIES
  CITYNAME
  DatabaseLog
  ErrorLog
  LINE_SETUP
  LORI2
  SCHOOLINFO
  STATES
  -----

F1=Help  F3=Exit  F4=Prompt  F12=Return

M A
```

RDBTables - Retrieve tables from remote databases

- Retrieve a list of remote database tables.

```

Remote Server.....: RDBMSSQL12 (F4=Prompt)
Table Generic.....: %

5=Display
Type Option, Press Enter
Opt Table Name
- AWBuildVersion
- CITIES
- CITYNAME
- DatabaseLog
- ErrorLog
- LINE_SETUP
- LORI2
- SCHOOLINFO
- STATES

Database Type

1=Select
Opt DB Type Description
- RDBACCESS MS ACCESS DB
- RDBDB2 DB2 Test
- RDBFIREB FireBird Database
- RDBMSSQL08 MSSQL 2008 Remote Database
- RDBMSSQL12 MSSQL12 remote database
- RDBMYSQL Chad's Megabas WareHouse
More...

F1=Help F3=Exit F12=Return

```

New

RDBTables - Retrieve database tables

A new prompt window was added for easy access to other database tables.


```
Remote Server.....: RDBMSSQL12
SQL Statement.....: select * from dbo.CITIES
```

<u>Remote Field Name</u>	<u>Field Type</u>	<u>Usage</u>	<u>Null</u>	<u>Type</u>	<u>Length</u>	<u>Dec</u>	
CIST	char	B	Y	A	2		
CICTY	char	B	Y	A	4		
CIRCD#	decimal	B	Y	S	7	0	
CICOUN	char	B	Y	A	3		
CILATD	char	B	Y	A	1		
CILNGD	char	B	Y	A	1		
CICOMZ	char	B	Y	A	6		
CICNTY	decimal	B	Y	S	3	0	
CIBEA	decimal	B	Y	S	3	0	
CIRGU	char	B	Y	A	1		
CISMSA	decimal	B	Y	S	4	0	
CIZIP1	char	B	Y	A	5		
CIZIP2	char	B	Y	A	4		
CISPLC	decimal	B	Y	S	7	0	+

F1=Help F3=Exit F10=Fold/Drop F12=Return

RDBFields - Remote database field description

Retrieve column details from a remote database table.

New

```
Set RDB Tracing (RDBTRACE)

Type choices, press Enter.

Set Tracing . . . . . *ON      *ON, *OFF
Log File Size MB . . . . . 64      Number
Send warning msg to Operator . . N      Y, N
Profile for warning message . . QSECOFR Character value
```

RDBTrace - Turn ON/OFF log tracing

- Set log tracing - *ON / *OFF
- Log file Size MB - Maximum number of megabytes allowed before a warning message.
- Send warning message to User - Send message to User Y/N
- Profile for warning message - Specific USERID where the message will sent after the tracelogs go over the maximum limit set.

New

```
Export To Remote Database (RDBEXPORT)

Type choices, press Enter.

Remote DB SQL Statement . . . . . _____
_____
_____
_____
_____

AS400 Export File . . . . . _____ Name
AS400 Library . . . . . *CURLIB Name, *CURLIB
Remote Server Id . . . . . _____ Character value
User Id . . . . . *CONFIG
Password . . . . . *CONFIG

Bottom
F3=Exit F4=Prompt F5=Refresh F12=Cancel F13=How to use this display
F24=More keys

Mâ A 05/037
```

RDBExport - Export data from IBM i to remote databases

New utility to export Tables from IBMi.

```

Remote Systems File Export      2015-09-14 10:46:05

File Name.....:  CITIES          Errors....: 00001
Library Name...:  DBUTEST

Field Name Description  Field Name  Type Name  Type  NULL  Length  Dec
State                  CIST       CHAR      A     Y     2
City                   CICTY     CHAR      A     Y     4
RECORD #              CIRCD#     ZONED     S     Y     7 0
Country                CICOUN     CHAR      A     Y     3
LATITUDE N/S DIR      CILATD     CHAR      A     Y     1
LONGITUDE E/W DIR     CILNGD     CHAR      A     Y     1      +
Remote Server :      RDBMSSL12 - MSSQL12 remote database
Server Schema.:      dbo

Field Name Description  Field Name  Type Name  Type  NULL  Length  Dec
CIST                   CIST       CHAR      A     Y     2
CICTY                  CICTY     CHAR      A     Y     4
CIRCD#                 CIRCD#     DECIMAL   S     Y     7 0
CICOUN                 CICOUN     CHAR      A     Y     3
CILATD                 CILATD     CHAR      A     Y     1
CILNGD                 CILNGD     CHAR      A     Y     1      +

F1=Help F3=Exit F6=Create Table F12=Cancel
Table and Data were transfered successfully.

MA  A                                01/001

```

RDBExport - Export data from a remote database

- Ability to create a table remotely
- Transfer an entire table's data

Additional API's added

- ▶ **RDBCrtTable**- Create a remote database table using SQL syntax
- ▶ **RDBSetIsoDate** - Set Date (ISO format) to transfer to a remote database
- ▶ **RDBSetIsoTime** - Set Time (ISO format) to transfer to a remote database
- ▶ **RDBSetCharStr** - Set character stream after a SQL prepared statement.
- ▶ **RDBGetCharStr** - Get character stream value after a SQL prepared statement
- ▶ **RDBSndErrAlert** - Send error alert messages to UserID specified in DTAARA

```

Session A - Prodata3.ws - [24 x 80]
File Edit View Communication Actions Window Help
Host: 10.11.203 Port: 23 Workstation ID: Disconnect
Work with Members Using PDM PRODATA3
File . . . . . RDBSRC
Library . . . . . RDB40 Position to . . . . .
Type options, press Enter.
2=Edit 3=Copy 4=Delete 5=Display 6=Print 7=Rename
8=Display description 9=Save 13=Change text 14=Compile 15=Create module...

Opt Member Type Text
-- EXAMPCSV1 RPGLE RDBConnect Example for ODBC CSV TXT Files
-- EXAMPLE RPGLE Reading recs from RDB and accessing the fields
-- EXAMPLEPRO RPGLE Example using a stored procedure PRODATA
-- EXAMPLE10 RPGLE Example using a external DS to insert row
-- EXAMPLE15 RPGLE Insert ISO Time in prep statement
-- EXAMPLE16 RPGLE Reading recs from RDB and accessing the fields
-- EXAMPLE17 RPGLE using a stored proc from MSSQL AdventureWorks2012
-- EXAMPLE19 RPGLE Use multiple Table Joins to import data
More...

Parameters or command
===>
F3=Exit F4=Prompt F5=Refresh F6=Create
F9=Retrieve F10=Command entry F23=More options F24=More keys

MA A 16/046
E0004 - Invalid password Samsung X4300 Series on 10.11.210_2

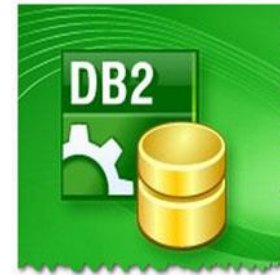
```

More examples

Added additional source examples to RDBSRC.

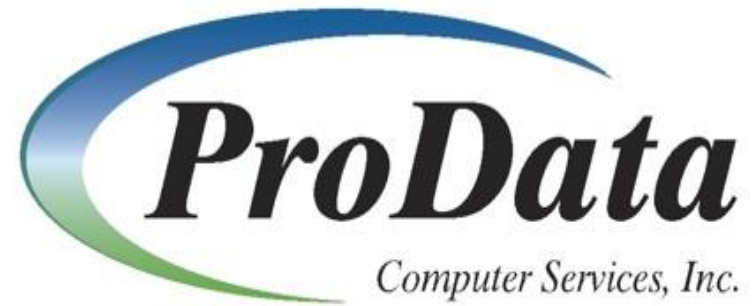
New updated JDBC drivers

Updated the JDBC drivers included in the installation package for the following databases.



RDB Connect

By



Web: <http://www.prodatacomputer.com>

2809 S 160 St Suite 401
Omaha, Nebraska 68130