

Connect to Dropbox via RDBConnect FTP

ProData Computer Services, Inc.



Edited 01/09/2023

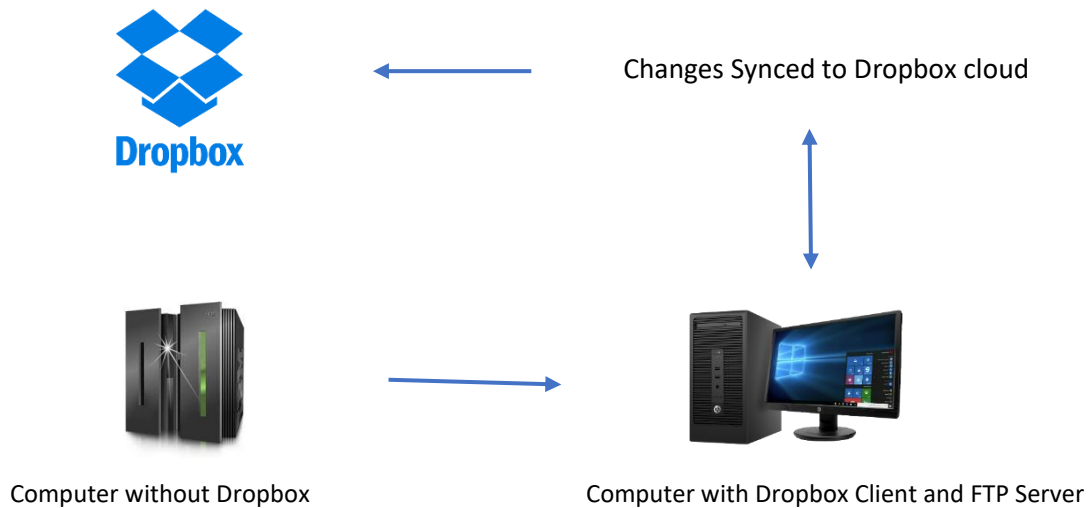
ProData Computer Services, Inc. - Copyright ©

18881 West Dodge Road, Suite 220W Omaha NE, 68022 800-228-6318 Fax 402-697-7576 <https://dodbu.com>

Table of Contents

1. Install Dropbox on a PC/Server	3
2. Configure your Computer with a Static IP address	3
3. Install Filezilla FTP Server	3
4. Configure Filezilla FTP Settings	3
5. Configure FTP Port Forwarding on your Router	5

1. Install Dropbox on a PC/Server



Make a note of the location of your local Dropbox storage folder. Normally it's going to be in C:\Users\[your username]\Dropbox – you'll need this later.

2. Configure your Computer with a Static IP address

Giving your desktop computer or server a static IP address ensures the port forwarding options you'll set in the next step don't have to be changed every time your computer gets a new IP (because it simply will keep the one you assign).

3. Install Filezilla FTP Server

Install the Filezilla Server application for free from filezilla-project.org and run the installer with all the defaults. Ensure that you select to run Filezilla as a service during installation.

4. Configure Filezilla FTP Settings

1. Once you complete the Filezilla Server installation, it will open up the server interface. The administration port will be filled out automatically. Click Connect.

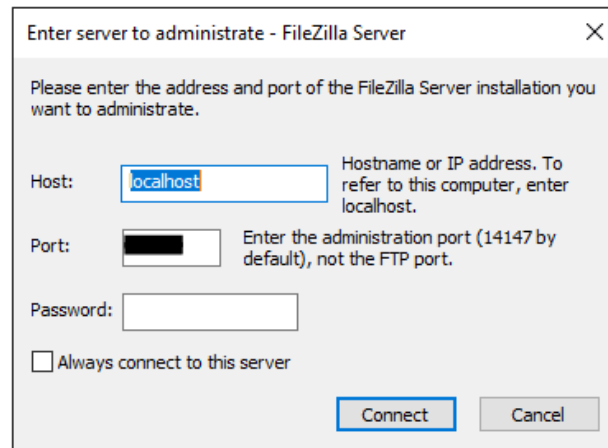


Figure 4-1

2. From the administration window, click the Edit menu and select Users. In the resulting window, you'll see the following:

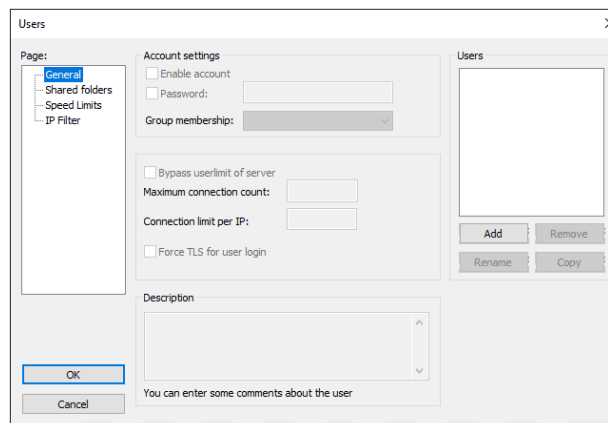


Figure 4-2

3. On the right-hand side, under Users, click Add. In the resulting window, type in your desired username and click OK. Back in the main Users window, checkmark the Password box and enter a strong password. Make note of the password.
4. Next, on the left-hand side select 'Shared folders' and under the resulting Shared Folders section, click Add. Navigate to your Dropbox directory and click OK (you should have noted this location in Step 1). Finally, click OK in the Users window and it will close automatically – in the administration windows, you'll notice a few lines pop up indicating that server settings have been sent.
 - a. At this point, you're now running an FTP server that you can connect to from any computer inside your home or office network using an FTP client – but in order to connect to your FTP server from an external location, there's one more step...

5. Configure FTP Port Forwarding on your Router

1. In order to connect to your FTP server from outside your network over the Internet, you'll need to configure port forwarding on your router. This is where the static IP of your computer comes into play. You'll want to forward incoming traffic on port 21 to the static IP you assigned your computer. You'll need to consult your router's documentation on how to do this because they're all different.
2. Once you've completed port forwarding, you'll need to find out what your external
3. IP address is for your router. You can do that simply by visiting WhatIsMyIpAddress.com from your FTP Server/Dropbox Client computer. Make a note of this IP address.
4. Your setup is now fully completed. You'll need to install an FTP client on the computer you'll be making a connection from (the computer that doesn't have direct access to Dropbox). Fortunately, Filezilla also has a [free client](#) that works on most platforms. Simply fill in the IP address you noted in Step 5 as the host, and the username/password combination you configured in Step 4 and BOOM, you're accessing Dropbox over FTP!