



## Spool File 2 EMAIL

By



2809 S. 160<sup>th</sup> St. Ste. #401  
Omaha, NE 68130

Telephone: (402) 697 - 7575  
Tollfree: (800) 228 - 6318

Web: <http://www.prodatacomputer.com>

Email Sales: [sales@prodatacomputer.com](mailto:sales@prodatacomputer.com)  
Email Tech Support: [help@prodatacomputer.com](mailto:help@prodatacomputer.com)

# Convert Spool File To Email (SPLF2EML)

Convert Spool File to Email (Splf2EML) allows you to convert your simple spooled output to a PDF file and then automatically Email it to a list of up to 15 recipients. The command supports \*PRV on all command parms. If \*PRV is used, the program will prompt the user with the previous options allowing the user to make changes.

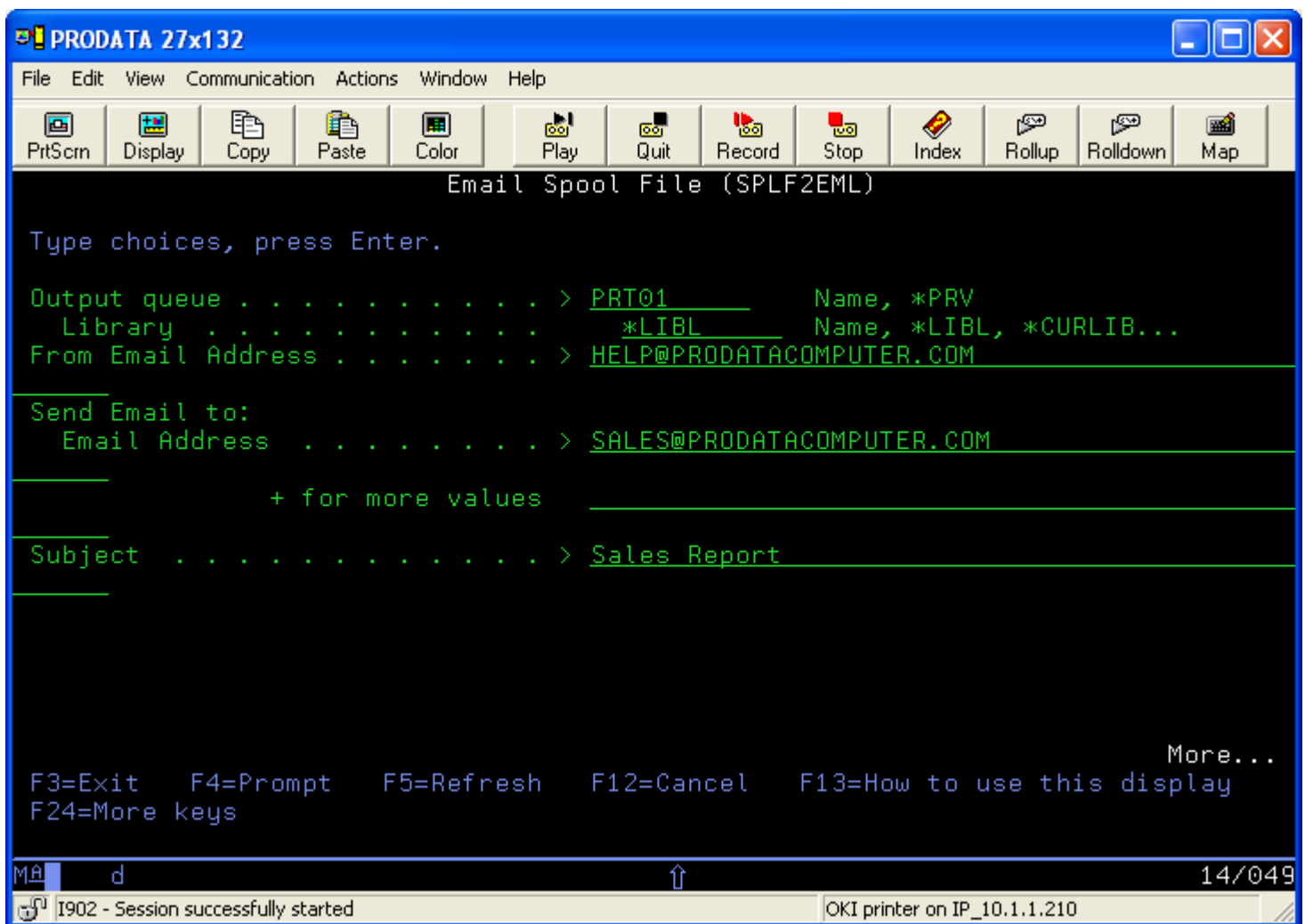
\*NOTE: Email must be configured on iSeries.

On the command line, enter ADDLIBLE SPLF2EML and press ENTER to add the SPLF2EML library to your library list.

On the command line, enter SPLF2EML and press F4 to bring up the SPLF2EML command prompt.

Fill in the parameters with your appropriate information, an example is shown below.

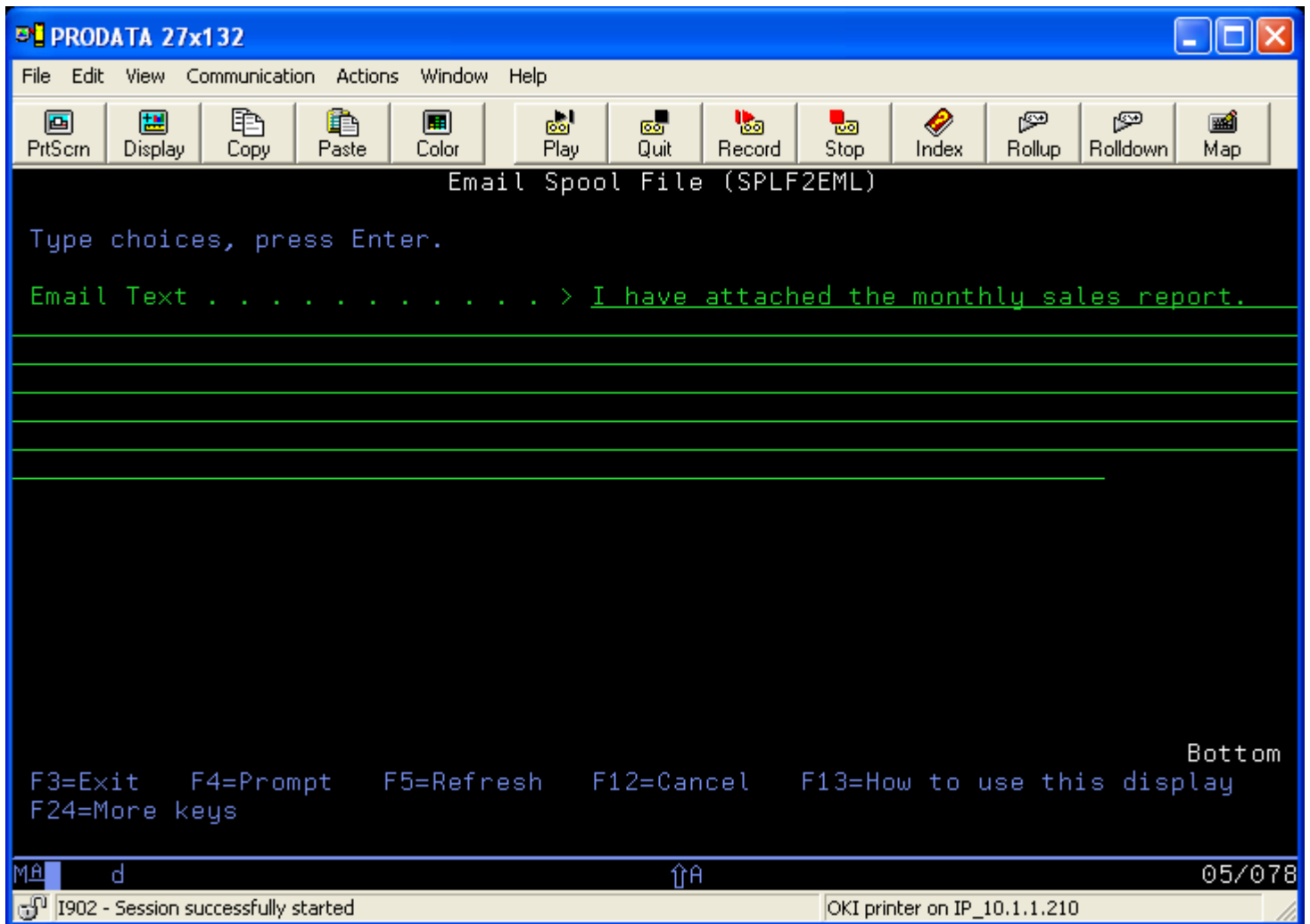
## The command:



**Note:** You must fill in the Output queue, Library, From Email Address and To Email Address.

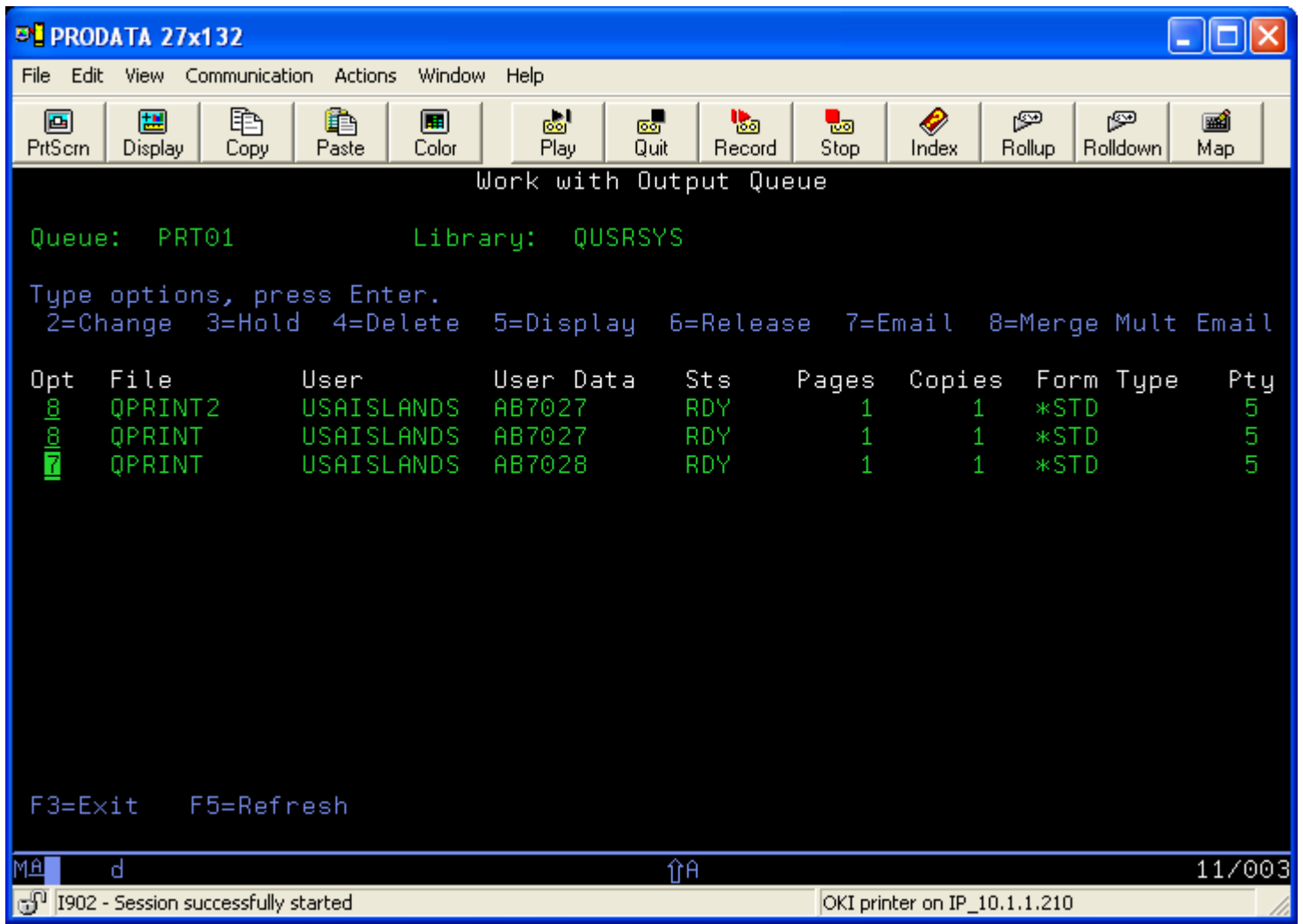
**Roll to the next page:**

You will be prompted for the email text.





Once the email information has been reviewed the user will then be presented with a list of reports from the requested output queue. The user can use option 7 to pick one or more spool files to be sent as individual PDF's or use option 8 to pick multiple spool files to be merged into one PDF document.



The report emailed.

